



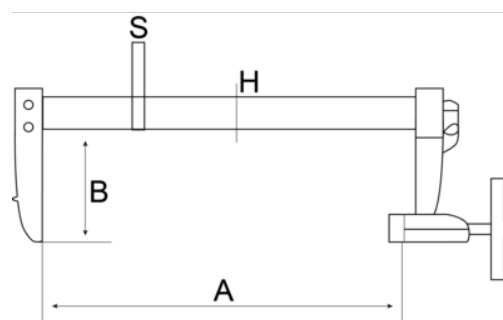
**420SH**

## **F-Clamps with Rubberised Handle**



### PRODUCT DETAILS


- Specially designed handle for heavy-duty use and soft feel
- Capacity 50 mm to 175 mm
- Tough and weather-resistant
- Zinc finished screw with special, plastic covered ball-swivel foot for secure and easy clamping of odd shapes
- High quality plastic caps for protection of clamped pieces
- Professional F clamp with one fixed and one sliding bracket fitted to a galvanised profiled steel rail
- Flag in a resistant plastic to include product data



**Follow the Fish!**



## PRODUCT ATTRIBUTES

Product	A	B	H	S	 g
<b>420SH-50-100</b>	100 mm	50 mm	15 mm	5 mm	340 g
<b>420SH-50-200</b>	200 mm	50 mm	15 mm	5 mm	390 g
<b>420SH-60-120</b>	120 mm	60 mm	22 mm	6 mm	570 g
<b>420SH-60-300</b>	300 mm	60 mm	22 mm	6 mm	740 g
<b>420SH-80-160</b>	160 mm	80 mm	22 mm	6 mm	820 g
<b>420SH-100-200</b>	200 mm	100 mm	30 mm	8 mm	1410 g
<b>420SH-120-250</b>	250 mm	120 mm	35 mm	11 mm	2370 g
<b>420SH-120-300</b>	300 mm	120 mm	35 mm	11 mm	2530 g
<b>420SH-120-400</b>	400 mm	120 mm	35 mm	11 mm	2830 g
<b>420SH-120-500</b>	500 mm	120 mm	35 mm	11 mm	3070 g
<b>420SH-120-600</b>	600 mm	120 mm	35 mm	11 mm	3290 g
<b>420SH-120-800</b>	800 mm	120 mm	35 mm	11 mm	3870 g
<b>420SH-120-1000</b>	1000 mm	120 mm	35 mm	11 mm	4400 g
<b>420SH-120-1250</b>	1250 mm	120 mm	35 mm	11 mm	5080 g
<b>420SH-120-1500</b>	1500 mm	120 mm	35 mm	11 mm	5750 g
<b>420SH-140-400</b>	400 mm	140 mm	35 mm	10 mm	2820 g
<b>420SH-175-400</b>	400 mm	175 mm	35 mm	9 mm	3070 g

**Follow the Fish!**

